

HW p. 196 & p. 197 12/17
4-9, 16, 17, 22 & 23

4.) slope = $\frac{\text{rise}}{\text{run}} = \frac{\Delta y}{\Delta x}$

$$m = \frac{4}{1}$$

equation: $y = 4x$

5.) slope = $\frac{\text{rise}}{\text{run}} = \frac{\Delta y}{\Delta x}$

$$m = \frac{3}{2}$$

equation: $y = \frac{3}{2}x$

6.) slope = $\frac{\text{rise}}{\text{run}} = \frac{\Delta y}{\Delta x}$

$$m = \frac{1}{3}$$

eq: $y = \frac{1}{3}x + 1$

7.) slope = $\frac{\text{rise}}{\text{run}} = \frac{\Delta y}{\Delta x}$

$$m = \frac{5}{5} = \frac{1}{1}$$

eq: $y = x + 3$

8.) slope = $\frac{\text{rise}}{\text{run}} = \frac{\Delta y}{\Delta x}$

$$m = \frac{3}{4}$$

eq: $y = \frac{3}{4}x$

9) slope = $\frac{\text{rise} = \Delta y}{\text{run} = \Delta x}$
 $m = \frac{8}{10} = \frac{4}{5}$ simplify

eg: $y = \frac{4}{5}x - 2$

16) yourself
 a) slope = $\frac{\text{rise} = \Delta y}{\text{run} = \Delta x}$
 $m = \frac{40}{2} = \frac{\$20}{1 \text{ week}}$

your friend's
 slope = $\frac{60}{4}$ simplify
 $m = \frac{\$15}{1 \text{ week}}$

your friend saves \$20 per week for a camping trip.

you save \$15 per week for a camping trip.

your friend's line is steeper than your line.

b) $m = \frac{\$20}{1 \text{ week}}$

$m = \frac{\$15}{1 \text{ week}}$

c) your friend saves \$5 more per week than you.

d) Let $x = \#$ of weeks

$15x = 165 \rightarrow$

17.)

b.) slope = $\frac{\text{rise}}{\text{run}}$

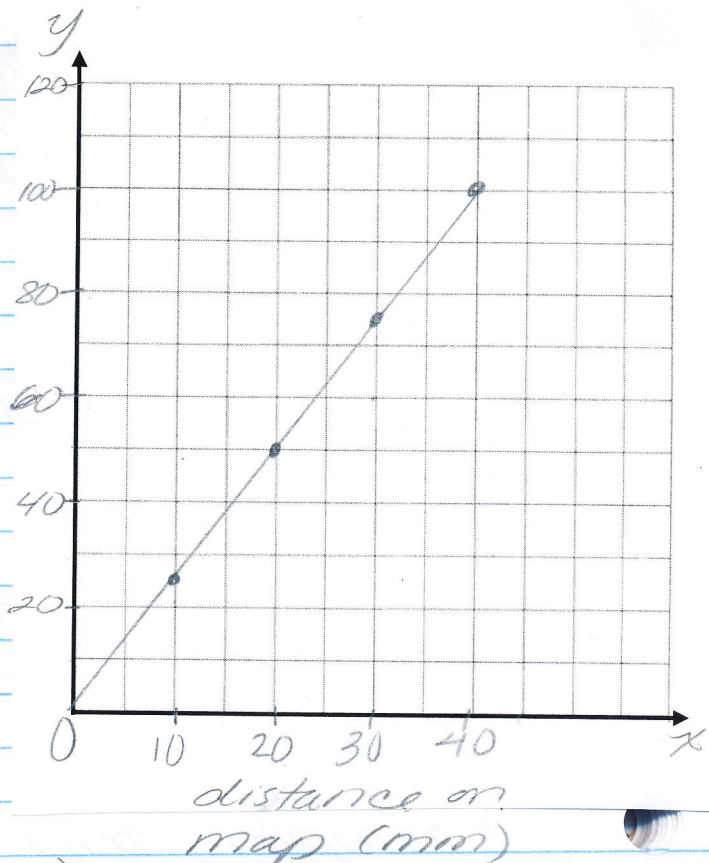
$m = \frac{\Delta y}{\Delta x}$

$m = \frac{25}{10}$ simplify

$m = \frac{5}{2}$

Slope means on a map a distance of 5 miles is represented by 2 mm.

Actual distance (mi)



c.) $y = \frac{5}{2}x$

$y = \frac{5}{2}(48)$

$y = 120 \text{ miles}$

d.) $y = \frac{5}{2}x$

$(2) 225 = \frac{5}{2}x (2)$

$\frac{450}{5} = \frac{5x}{5}$

$90 = x$

90 mm

22.) $-2\frac{1}{4} \times (-\frac{1}{3})$

$-\frac{9}{4} \times -\frac{4}{3}$

3

23.) $(8) \frac{3}{18}x = 18(8)$

$\frac{3x}{3} = \frac{144}{3}$

$x = 48 \text{ total}$

$\frac{48}{-18} = \frac{30}{30}$

30 US Choice C