

HW: Jan 4 Answer Key

HW: Graphing Linear Equation Slope- Intercept Form

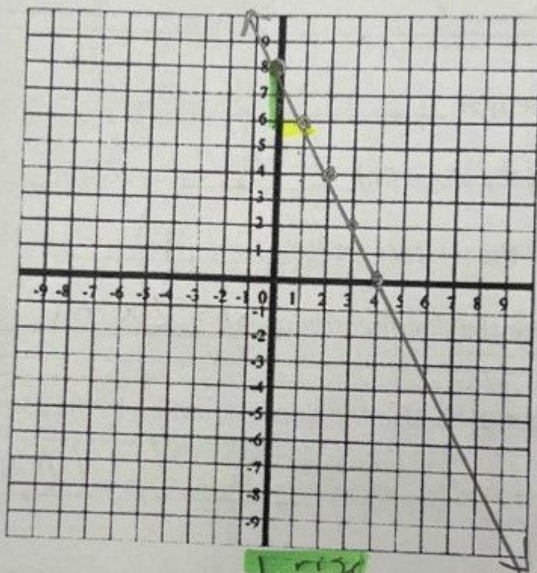
Name: _____ ⁶²
Math 7H - Jan. 34 Glue on page ~~62~~
Created for you by Ms. Nhotsoubarh

Directions: Use the linear equation in the form $y = mx + b$ to graph each line. Then state the type of slope.

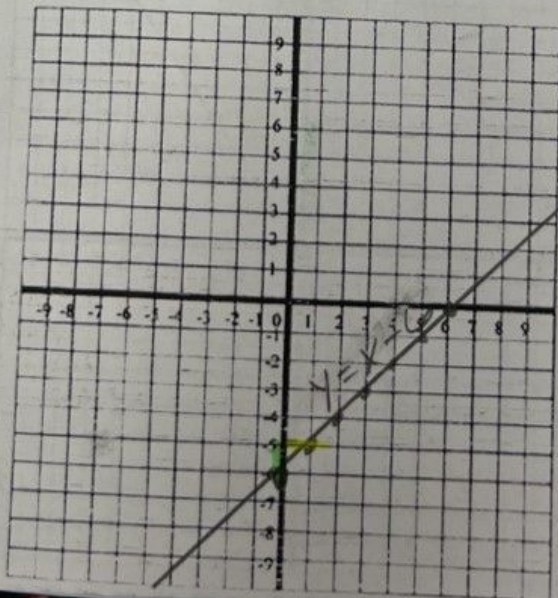
$$y = mx + b$$

Slope (m) $\frac{\text{rise}}{\text{run}}$ slope y-intercept (b)

1) $y = -2x + 8$ $m = \frac{-2 \text{ rise}}{1 \text{ run}}, b = (0, 8)$

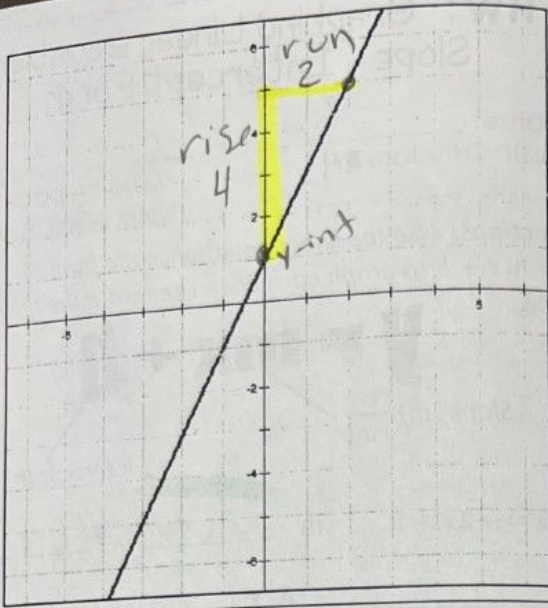


2) $y = x - 6$ $m = \frac{1 \text{ rise}}{1 \text{ run}}, b = (0, -6)$



HW: Jan 4 Answer Key

3)



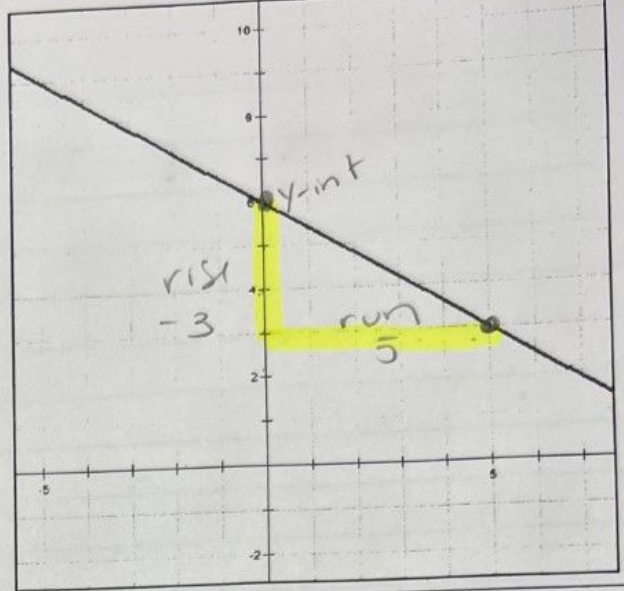
Slope type positive

Find the slope (m) $\frac{4}{2} = \frac{2}{1}$

Find the y-intercept (b) $(0, 1)$

Write the linear equation $y = 2x + 1$

4)



Slope type negative

Find the slope (m) $-\frac{3}{5}$

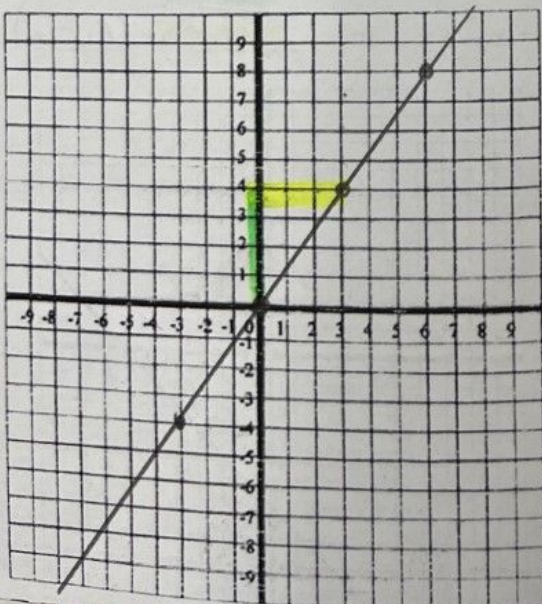
Find the y-intercept (b) $(0, 6)$

Write the linear equation $y = -\frac{3}{5}x + 6$

DIRECTIONS: Use the linear equation in the form $y = mx + b$ to graph each line. Then state the type of slope.

5) $y = \frac{4}{3}x$

$m = \frac{4 \text{ rise}}{3 \text{ run}}, b = (0, 0)$



6) $y = -\frac{5}{3}x + 6$

$m = \frac{-5 \text{ rise}}{3 \text{ run}}, b = (0, 6)$

