

# HW: Oct. 25 Answer Key

55

## 10/25 HOMEWORK

$$1) \quad 8x + 12 = 5x - 36$$

$$\begin{array}{r} -5x \\ \hline 3x + 12 = -36 \end{array}$$

$$3x + 12 = -36$$

$$\begin{array}{r} -12 \\ \hline 3x = -48 \end{array}$$

$$\begin{array}{r} 3 \\ \hline x = -16 \end{array}$$

$$\boxed{x = -16}$$

$$2) \quad 7 + 2(w - 4) = 23 - 6w$$

$$7 + 2w - 8 = 23 - 6w$$

$$2w - 1 = 23 - 6w$$

$$\begin{array}{r} +6w \\ \hline 8w - 1 = 23 \end{array}$$

$$8w - 1 = 23$$

$$\begin{array}{r} +1 \\ \hline 8w = 24 \end{array}$$

$$\begin{array}{r} 8 \\ \hline w = 3 \end{array}$$

$$\boxed{w = 3}$$

$$3) \quad 5(2d - 7) = 3d + 5 + 12d$$

$$\begin{array}{r} 10d - 35 = 3d + 5 \\ -10d \\ \hline -35 = 5d + 5 \end{array}$$

$$-35 = 5d + 5$$

$$\begin{array}{r} -5 \\ \hline -40 = 5d \end{array}$$

$$-40 = 5d$$

$$\begin{array}{r} 5 \\ \hline d = -8 \end{array}$$

$$\boxed{d = -8}$$

$$4) \quad 9 + 4(x - 3) = 6x + 5$$

$$9 + 4x - 12 = 6x + 5$$

$$4x - 3 = 6x + 5$$

$$\begin{array}{r} -4x \\ \hline -3 = 2x + 5 \end{array}$$

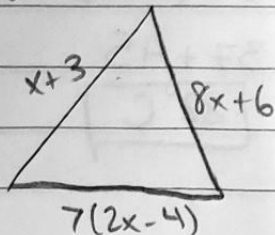
$$-3 = 2x + 5$$

$$\begin{array}{r} -5 \\ \hline -8 = 2x \end{array}$$

$$\begin{array}{r} -8 \\ \hline -4 \end{array}$$

$$\boxed{x = -4}$$

5)



Perimeter

$$x + 3 + 8x + 6 + 7(2x - 4)$$

$$\textcircled{x} + 3 + \textcircled{8x} + 6 + \textcircled{14x} - 28$$

$$\boxed{23x - 19}$$

# HW: Oct. 25 Answer Key

56

6)  $\frac{4}{3} + 2\frac{2}{3}$  LCM=15

(3)  $\frac{19}{5} + \frac{8}{3}$   
(3)  $\frac{19}{5} + \frac{8}{3}$

$$\frac{57}{15} + \frac{40}{15}$$

$$\frac{97}{15} = 6\frac{7}{15}$$

7)  $\frac{15}{32} = 0.46875$

$$\boxed{15 \div 32}$$

Calc

8) 3.65 to fraction

$$3.65 = 3\frac{65}{100}$$

$$= 3\frac{13}{20}$$

9)

$$\frac{15}{18} \text{ (circled)} > 0.8$$

150

144

$$\frac{15}{18} \times \frac{8}{10}$$

cross product

10) Translate:

7 less than 4 times a number

is 33

$$\boxed{4x - 7 = 33}$$

11) Difference b/w

$-45^{\circ}\text{C}$  and  $37^{\circ}\text{C}$ ?

$$37 - (-45)$$

$$37 + 45$$

$$\boxed{82^{\circ}\text{C}}$$