

HW: green text p. 519

#s 10, 13, 15, 18

69

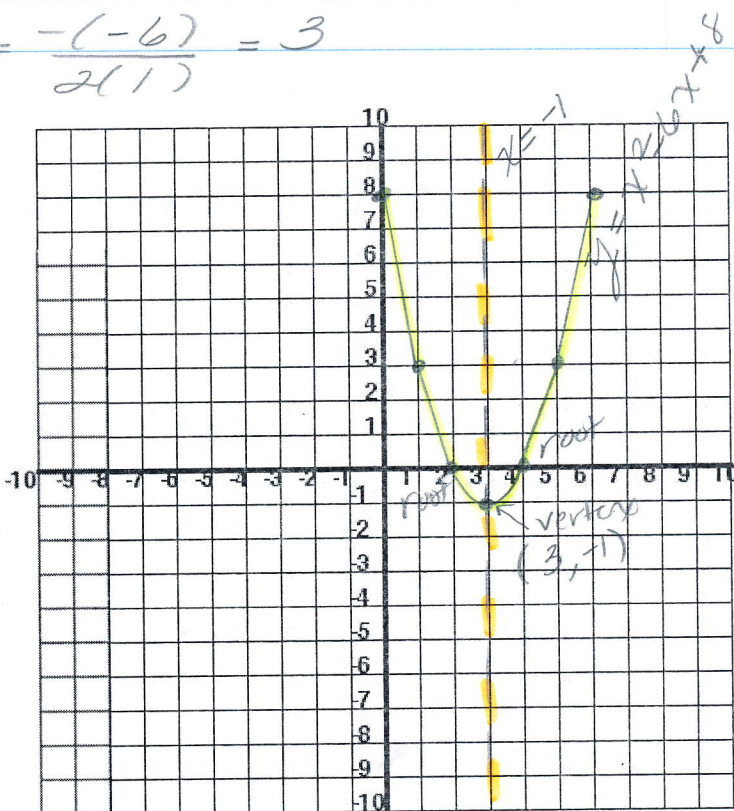
10.)

$$y = x^2 - 6x + 8 \quad (0 \leq x \leq 6)$$

$$x = \frac{-b}{2a} = \frac{-(-6)}{2(1)} = 3$$

x	y
0	8
1	3
2	0
3	-1
4	0
5	3
6	8

axis of sym.



13.)

$$y = -x^2 - 2x + 3 \quad (-4 \leq x \leq 2)$$

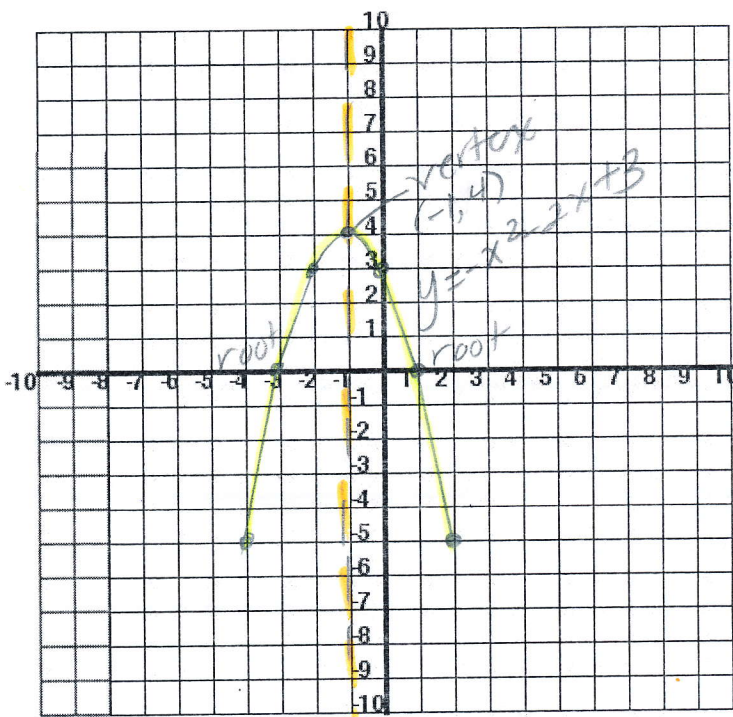
$$x = \frac{-b}{2a}$$

$$x = \frac{-(-2)}{2(-1)}$$

$$x = -1$$

axis of sym.

x	y
-4	-5
-3	0
-2	3
-1	4
0	3
1	0
2	-5





15.)

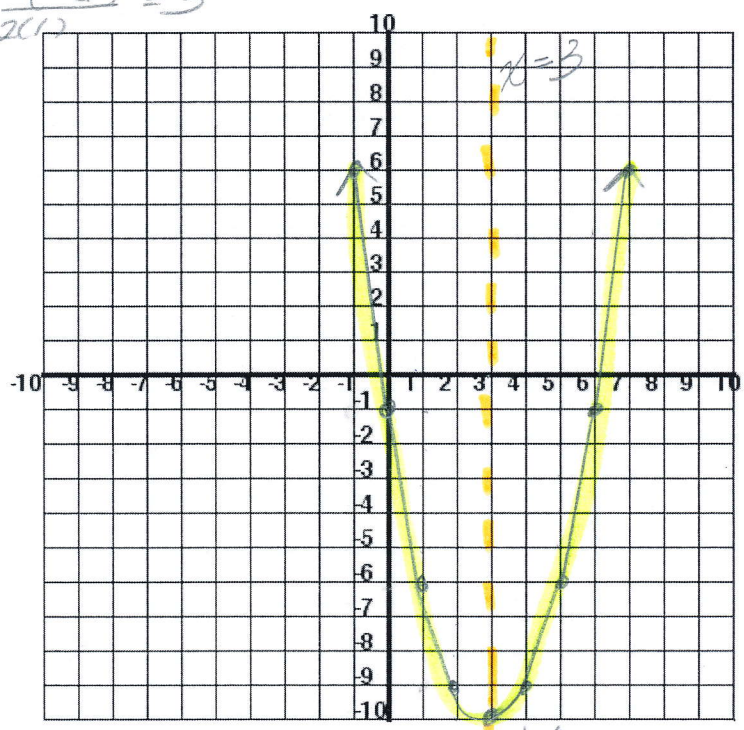
$$y = x^2 - 6x - 1$$

$$x = \frac{-b}{2a} = \frac{-(-6)}{2(1)} = 3$$

$$x = 3$$

x	y
0	-1
1	-6
2	-9
3	-10
4	-9
5	-6
6	-1

axis of symmetry  
vertex



18.)

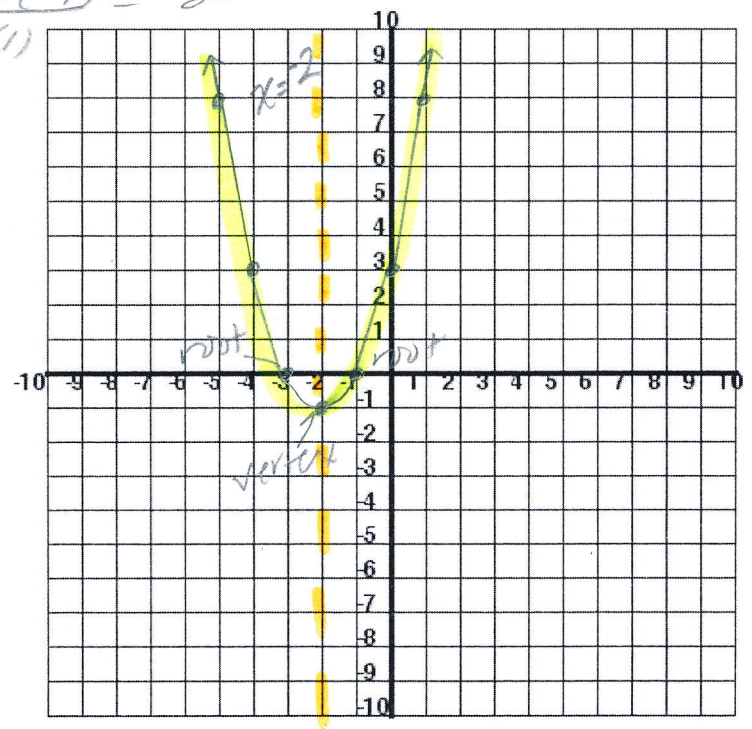
$$y = x^2 + 4x + 3$$

$$x = \frac{-b}{2a} = \frac{-(4)}{2(1)} = -2$$

$$x = -2$$

x	y
-5	8
-4	3
-3	0
-2	-1
-1	0
0	3
1	8

vertex



\* arrows are used when intervals are not given.