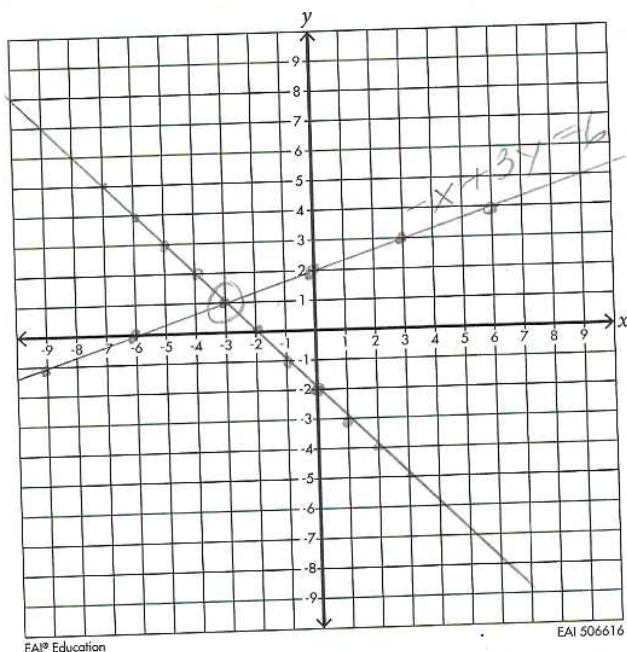


3.)



$$\begin{array}{r} -x + 3y = 6 \\ +x \quad \quad +x \\ \hline \end{array}$$

$$\frac{3y}{3} = \frac{x+6}{3}$$

$$y = \frac{1}{3}x + 2$$

$$m = \frac{1}{3} \quad b = (0, 2)$$

$$\begin{array}{r} x + y = -2 \\ -x \quad \quad -x \\ \hline \end{array}$$

$$y = -x - 2$$

$$m = -1 \quad b = (0, -2)$$

$$(-3, 1)$$

4)  $x + x + 4 = 36$

$$2x + 4 = 36$$

$$\begin{array}{r} -4 \quad -4 \\ \hline \end{array}$$

$$\frac{2x}{2} = \frac{32}{2}$$

$$x = 16$$

6)  $3x - 3 = x + 8 + 15$

$$3x - 3 = x + 23$$

$$\begin{array}{r} -x \quad -x \\ \hline \end{array}$$

$$2x - 3 = 23$$

$$\begin{array}{r} +3 \quad +3 \\ \hline \end{array}$$

$$\frac{2x}{2} = \frac{26}{2}$$

$$x = 13$$

5)  $2(x - 18) = x - 12$

$$2x - 36 = x - 12$$

$$\begin{array}{r} -x \quad -x \\ \hline \end{array}$$

$$x - 36 = -12$$

$$\begin{array}{r} +36 \quad +36 \\ \hline \end{array}$$

$$x = 24$$

$$\begin{array}{r} 24 - 4 \\ 18 \end{array}$$

Victoria = 24 yrs

Lexi = 18 yrs

$$1st = 13$$

$$2nd = 13 + 8 = 21$$

$$3rd = 3(13) - 3 = 36$$

71

$$7.) \quad x + 3x - 1 = 63$$

$$4x - 1 = 63$$

$$\begin{array}{r} +1 \quad +1 \\ \hline 4x = 64 \\ \underline{4} \quad \underline{4} \end{array}$$

$$x = 16$$

$$3(16) - 1 = 47$$

$$8.) \quad 4x + 8y = 24$$

$$\begin{array}{r} 4x = 24 \\ \underline{4} \quad \underline{4} \end{array}$$

$$x = 6$$

$$9.) \quad 5x + 20 + 10x = 125$$

$$15x + 20 = 125$$

$$\begin{array}{r} -20 \quad -20 \\ \hline 15x = 105 \end{array}$$

$$\begin{array}{r} 15 \quad 15 \\ \hline x = 7 \end{array}$$

$$x = 7$$

$$\$5 = 7 + 4 = 11 \text{ bills}$$

$$\$10 = 7 \text{ bills}$$